

Advancing the High-Grade, Resource-Stage Great Burnt Copper-Gold Project IN NEWFOUNDLAND

BENTON
RESOURCES INC.

TSXV: BEX

MARCH 2024

What You Need to Know ABOUT BENTON

- T Successful **Project Generator** with Extensive Multi-Commodity Portfolio
- T **Equity Holdings and NSRs** in Multiple Prospective Mineral Exploration Companies
- T Management and Board have a combined 150+ years of exploration and discovery successes and have been **awarded** several NWOPA Discovery of the Year Awards, PDAC Bill Dennis Award, and NL-CIM Explorer of the Year Award in 2023
- T Famed mining financier **Eric Sprott** is the largest shareholder
- T **JV with Sokoman Minerals** on three large-scale, multi-commodity projects in Newfoundland, including Kraken and Killick Lithium Discoveries – now part of Vinland Lithium Inc. financed by a major, **Piedmont Lithium**
- T Currently focused on advancing its **resource-stage, high-grade** Great Burnt Copper-Gold Project in south-central Newfoundland



Great Burnt Copper-Gold Project

- T Excellent geological setting covering **25 km of strike**
- T **6 known historical zones** over 15 km with significant Copper, Gold, Silver, Zinc and Cobalt values; all open for expansion
- T **Mineral Resource Estimate** of 667,000 tonnes @ 3.21% Cu Indicated and 482,000 @ 2.35% Cu Inferred
- T Recent trenching exposed **high-grade gold at the South Pond Area**, which in 2021 produced such drill intercepts as 1.69g/t Au over 51 m, including 3.19g/t Au over 11.00m
- T **Phase 1 (5,650 m) drill** program was extremely successful with semi-massive/massive sulphides intersected in all 22 drill holes, expanding the known deposit limits and confirming high-grade copper core throughout the deposit
- T **Phase 2 started in February 2024**, aiming to expand the deposits and confirmed resources

Benton 2023 Drilling

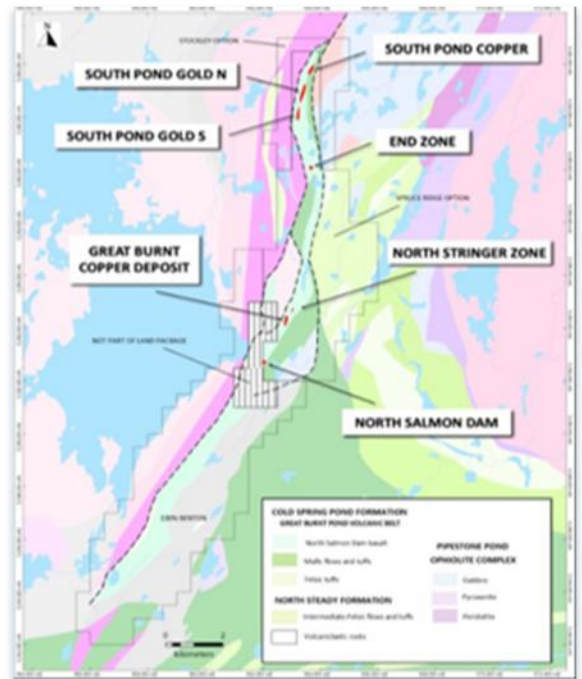
HIGHLIGHTS

- T GB23-02: 13.00m of 8.31% Cu, incl 3.00m of 12.80% Cu
- T GB23-04: 26.87m of 7.18% Cu, incl 11.16m of 10.28% Cu
- T GB23-12: 25.42m of 5.51% Cu, incl 1.00m of 8.77%Cu, 82.00g/t Ag, 4.43g/t Au
- T GB23-15: 22.59m of 5.03% Cu, incl 0.50m of 20.00% Cu
- T GB23-21: 24m of 5.81% Cu, incl 7.00m of 11.47% Cu
- T GB23-22: 21.68m of 3.59% Cu, incl 2.00m of 15.3% Cu

“

This has been the most successful drill campaign in the history of our Company, delivering exceptional grades and thicknesses. Our team is excited about the future of this excellent project and our ability to expand the deposit. Great Burnt is a Company Maker.

Stephen Stares, CEO



Vinland Lithium

SPIN-OUT

- T Spin-out of Vinland Lithium underway with seed financing of \$2.0M(CAD) at \$1.00 per share completed by Piedmont
- T Piedmont to pay Benton and Sokoman \$5.0M each and spend \$12M on Vinland's Killick property over the option period (54 months)
- T Benton and Sokoman each hold 4.0M shares of Vinland and Piedmont holds 2.0M shares
- T After Piedmont completes its \$12M in expenditures, a 62.5% Piedmont and 37.5% Vinland Joint Venture will be formed

