

**BENTON**  
RESOURCES INC.

  
**SOKOMAN**  
MINERALS CORP.

**The Kraken Pegmatite Field**  
*An emerging new Lithium  
& Cesium discovery in  
Southwestern Newfoundland*

**2023**

TSXV: BEX | TSXV: SIC | OTCQB: SICNF

# Forward-Looking Statements

During the course of this presentation, Benton Resources Inc. may make forward-looking statements with regard to the company's projects and or business plans. Statements may also be made with regard to the company's business strategy, products, partners, and market position which could be construed as forward-looking. Forward-looking statements are subject to risk and uncertainties that could cause results to be materially different than expectations.

The presentation has been prepared by management of Benton Resources Inc., and does not represent a recommendation to buy or sell these securities. Investors should always consult their Investment Advisors prior to making any Investment Decision.

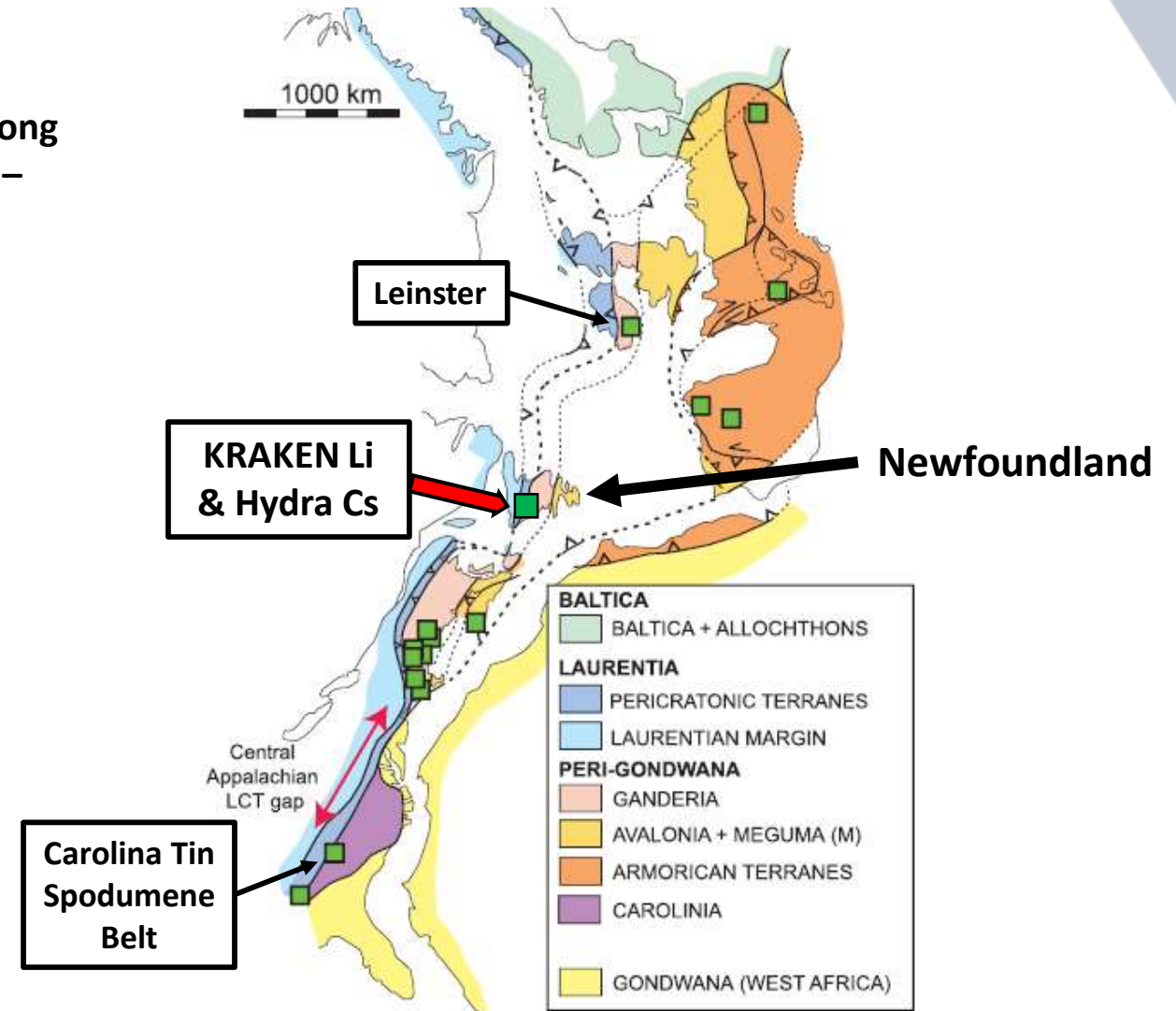
Intersection widths are core widths, unless otherwise stated.

# Golden Hope JV – Kraken Lithium and Hydra Cesium Discovery

## BIG PICTURE

- The key structural control on lithium districts is recognized along the length of the Appalachian – Caledonian Orogen (Leinster – UK; Piedmont – USA; Kraken – Newfoundland)
- Major collisional boundary
- Significant Li resources known in the Carolina Tin-Spodumene Belt (Piedmont Lithium); and at Leinster (Ireland)
- Promising new discovery in Newfoundland - Kraken

**APPALACHIAN - CALEDONIAN  
(and Variscan)  
LCT PEGMATITE-HOSTED LITHIUM  
in the North Atlantic Borderlands**



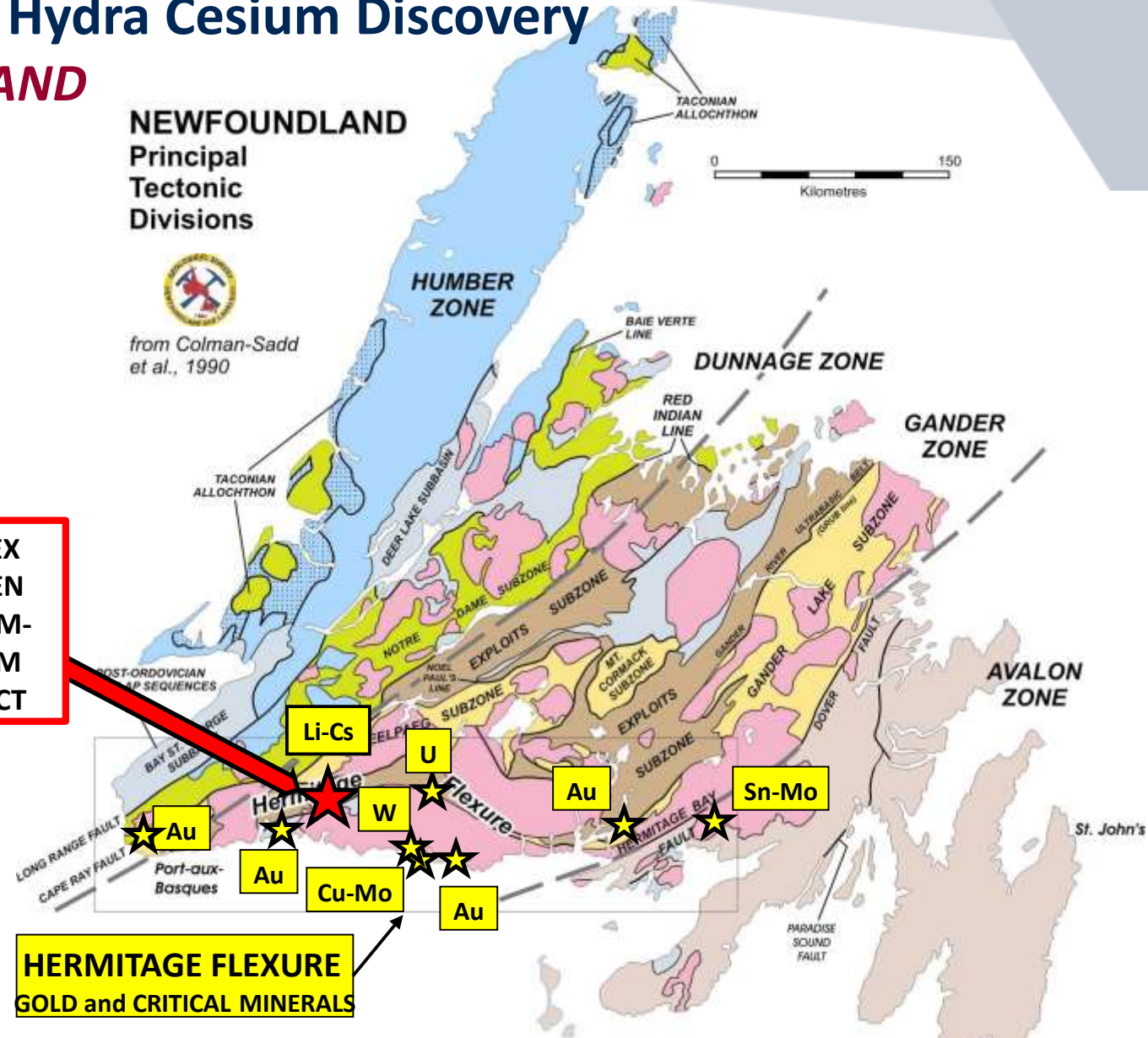
# Golden Hope JV – Kraken Lithium and Hydra Cesium Discovery

## APPALACHIAN OROGEN IN NEWFOUNDLAND

Does Newfoundland have potential to host significant lithium & cesium deposits?

- Hermitage Flexure part of a major Appalachian collision zone between Laurentia and Gondwana
- Locus of peak Appalachian Siluro-Devonian magmatism, deformation & metamorphism
- Reactivated crustal-scale faults
- Thick widespread successions of Silurian and older metasedimentary country rocks
- Greenschist to upper amphibolite metamorphic rocks

SIC-BEX  
KRAKEN  
LITHIUM-  
CESIUM  
PROJECT

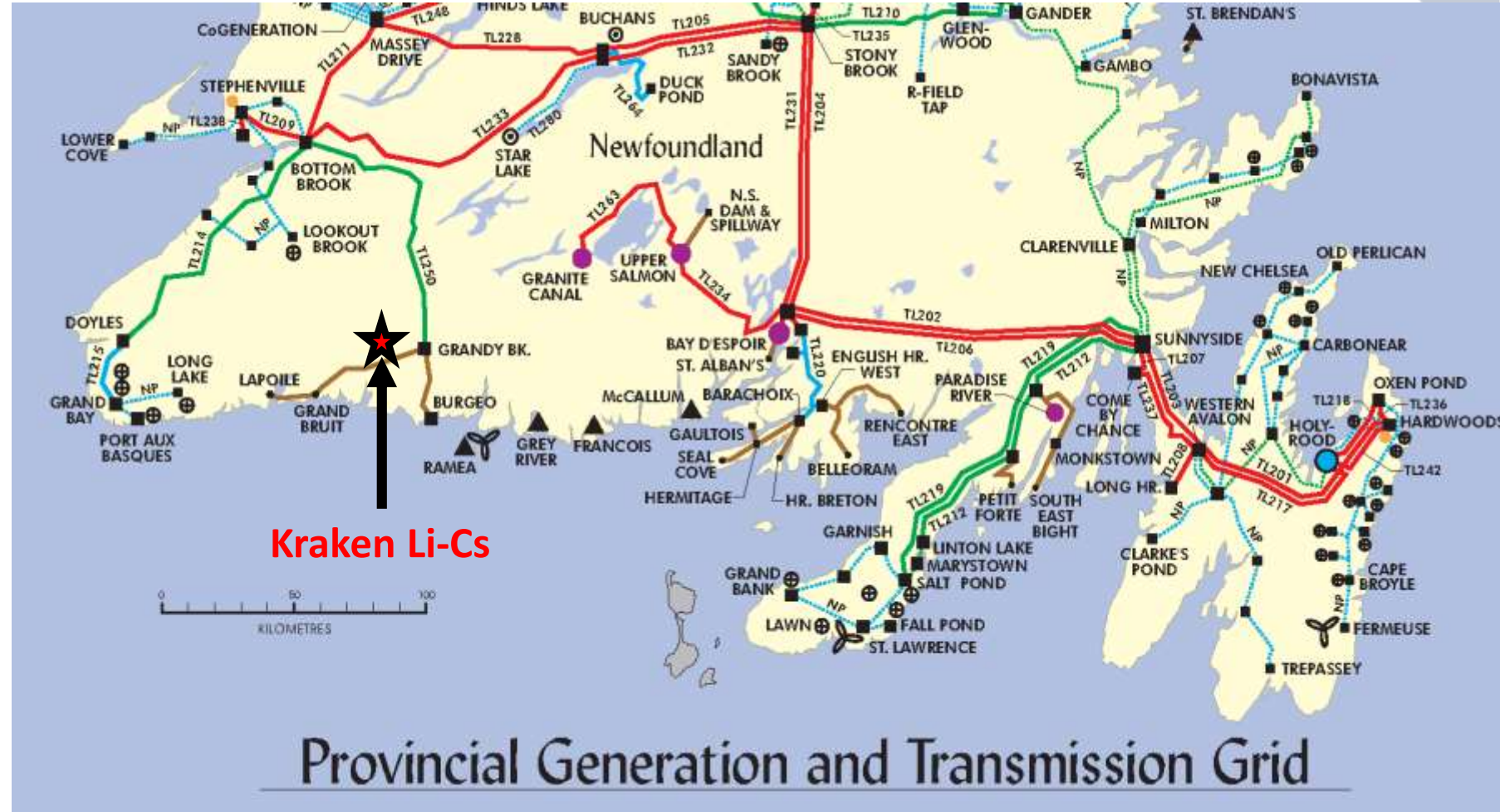


# Golden Hope JV – Kraken Lithium and Hydra Cesium Discovery

## INFRASTRUCTURE

The high value of spodumene concentrate is largely determined by great infrastructure

- Close to paved roads (14 km)
- High voltage substation at Grandy's Brook (10 km)
- Ice-free deep water port (35 km)
- Supportive communities

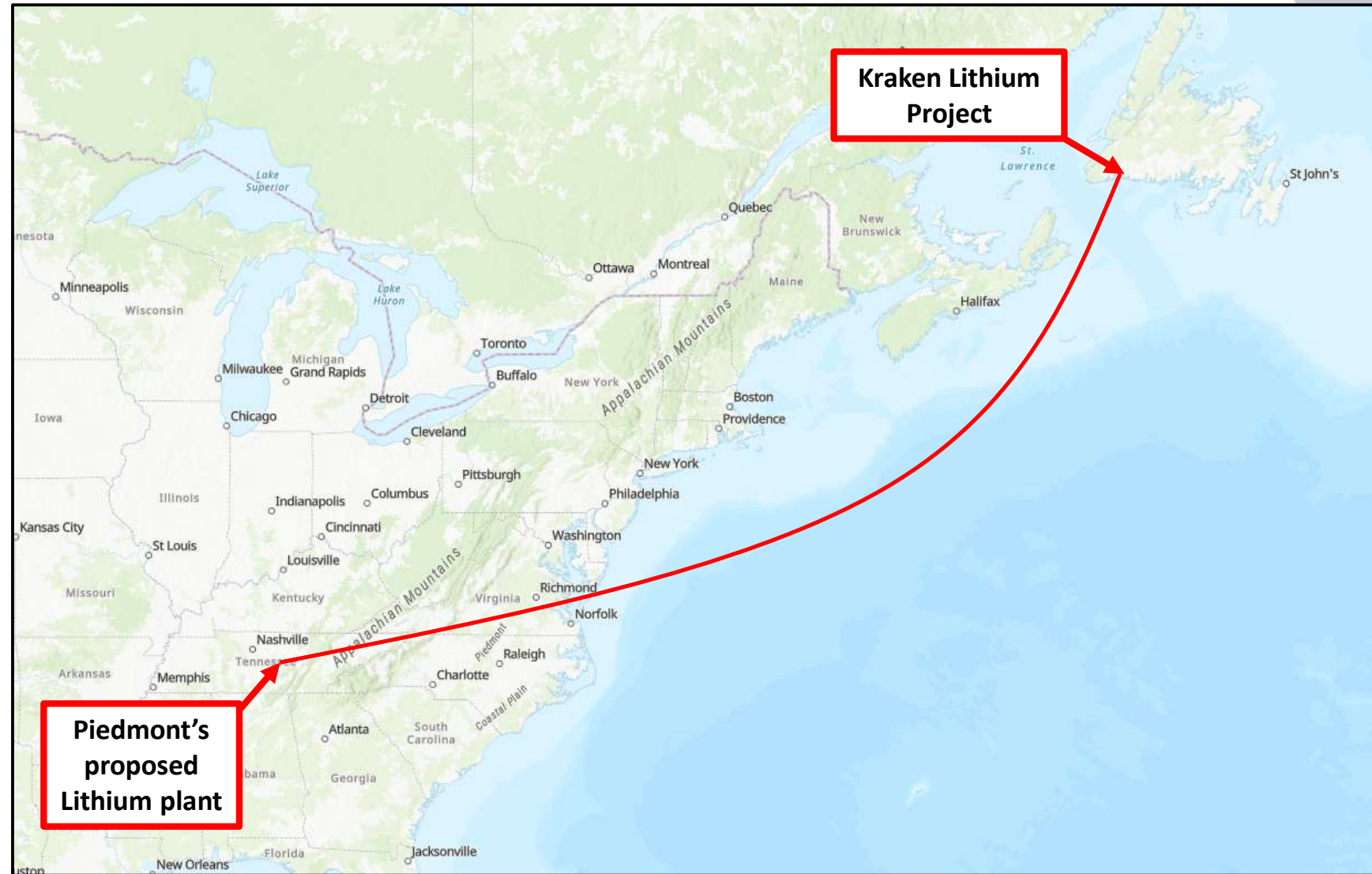


# Golden Hope JV – Kraken Lithium and Hydra Cesium Discovery

## **STRATEGIC LOCATION**

The high value of spodumene concentrate is benefited by great location

- Kraken lies along international shipping routes along the East Coast of Canada and the U.S.A
- This Eastern Seaboard location allows possible transport of concentrate to emerging developments in the U.S.A.



# Golden Hope JV – Kraken Lithium and Hydra Cesium Discovery

*A 50/50 JOINT VENTURE BETWEEN SOKOMAN MINERALS CORP. AND BENTON RESOURCES INC.*

- First-ever Lithium and Cesium discoveries on the mining-friendly Island of Newfoundland
- The Kraken Pegmatite Field Lithium discovery consists of multiple Spodumene-bearing LCT pegmatite dykes including the Kraken, Killick and East Dykes.
- A new Cesium discovery, the Hydra Dyke, was made in 2022 and is located 12 km to the northeast of the Kraken Area
- Significant grades (up to 2.37% Li<sub>2</sub>O surface grabs) in multiple pegmatite dykes sampled over a 2 km X 1 km dyke swarm area
- Maiden diamond drilling resulted in multiple intersections with significant grades and widths of Li mineralization in 2022
- Prospecting and soil geochemical sampling have resulted in the new, high-grade Cesium-bearing Hydra Dyke, and have generated multiple anomalies for immediate follow-up prospecting and evaluation
- District-scale property consisting of > 3,200 claims (800 sq km) covering 60 km of strike length along key structure – Bay d’Est Fault in SW Newfoundland
- Favourable Location, Access and Infrastructure

# Golden Hope JV – Kraken Lithium and Hydra Cesium Discovery

## 2022 ACHIEVEMENTS AT A GLANCE...

- **Discovery of multiple LCT Pegmatite Dykes with Lithium and Cesium mineralization**
- **Exploration focus on the Kraken Pegmatite Field which includes the spodumene-bearing Kraken, Killick and East Dykes**
- **Drilling Intersections from initial 2022 program within the Kraken Pegmatite Field include:**
  - **15.23 m @ 1.04% Li<sub>2</sub>O in GH-22-27 and 9.50 m @ 1.08% Li<sub>2</sub>O in GH-22-26 from the Killick Dyke**
  - **20.82 m @ 0.60% Li<sub>2</sub>O incl. 5.50m @ 1.16% Li<sub>2</sub>O in GH-22-15, and 8.37 m @ 0.92% Li<sub>2</sub>O in GH-22-08 from the East Dyke**
  - **8.40 m @ 0.95% Li<sub>2</sub>O in GH-22-01 from the Kraken Dyke and 16.20 m @ 0.43% Li<sub>2</sub>O in GH-22-05 on the Kraken North Dyke**
- **New Hydra Cesium Discovery made 12 km NE of Kraken Field with results to 8.75% Cs<sub>2</sub>O, 0.41% Li<sub>2</sub>O, 0.025% Ta<sub>2</sub>O<sub>5</sub> and 0.33% Rb<sub>2</sub>O over 1.20 m in channel sampling. The dyke is estimated to be 5-6 m wide and was traced along strike for 100 m where overburden covers the zone. Drilling will be conducted in 2023.**
- **Regional soil geochemistry and prospecting have identified multiple Li-Ta anomalies for evaluation which bodes well for additional discovery of LCT pegmatite dykes in 2023**
- **Initiation of Granite-Related Critical Minerals Research in Southern Newfoundland led by James Conliffe NL Geological Survey (NL Survey, MUN, St.FX, GSC)**



# Golden Hope JV – Kraken Lithium and Hydra Cesium Discovery

## SOME KEY POINTS AND DEPOSIT TYPE ATTRIBUTES

- Exploration for lithium in the Carolina Tin-Spodumene Belt (Piedmont Lithium); and at Leinster belt (Ireland) has been conducted for decades
- 2021 was the first year of exploration for Lithium and Cesium on the mining friendly Island of Newfoundland, by 2022, the Alliance has discovered multiple Lithium and Cesium mineralized LCT pegmatites
- Lithium deposits in these belts are known to form in multiple clusters - This is emerging at Kraken
- Over 60 km of strike to explore on district-scale property (800 sq km) which has the potential to host many more lithium and/or cesium discoveries
- Diamond drilling to resume spring 2023, along with an extensive regional exploration program consisting of geochemical surveys, prospecting and trenching

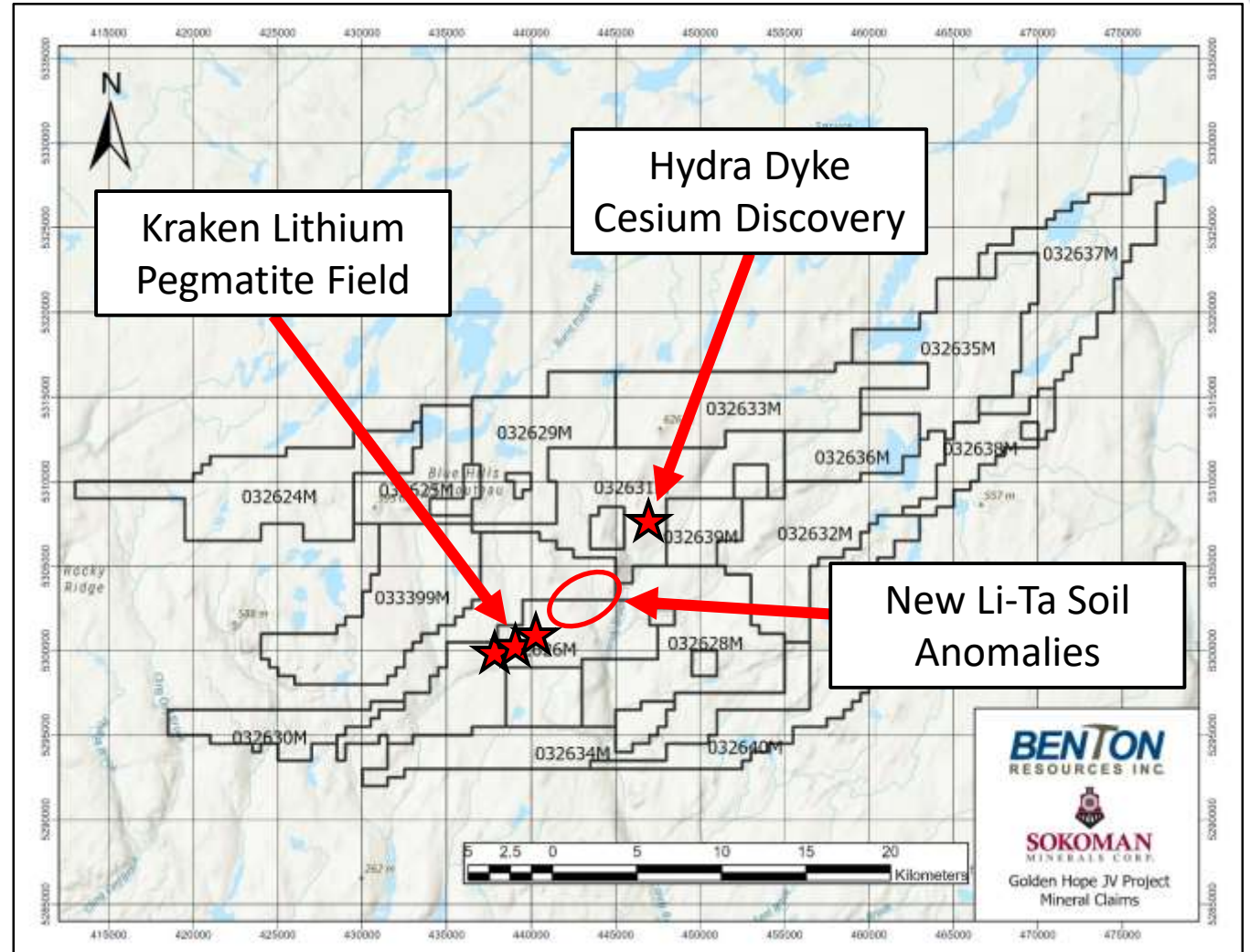


CEO's handshake at Grey River!

# Golden Hope JV – Kraken Lithium and Hydra Cesium Discovery

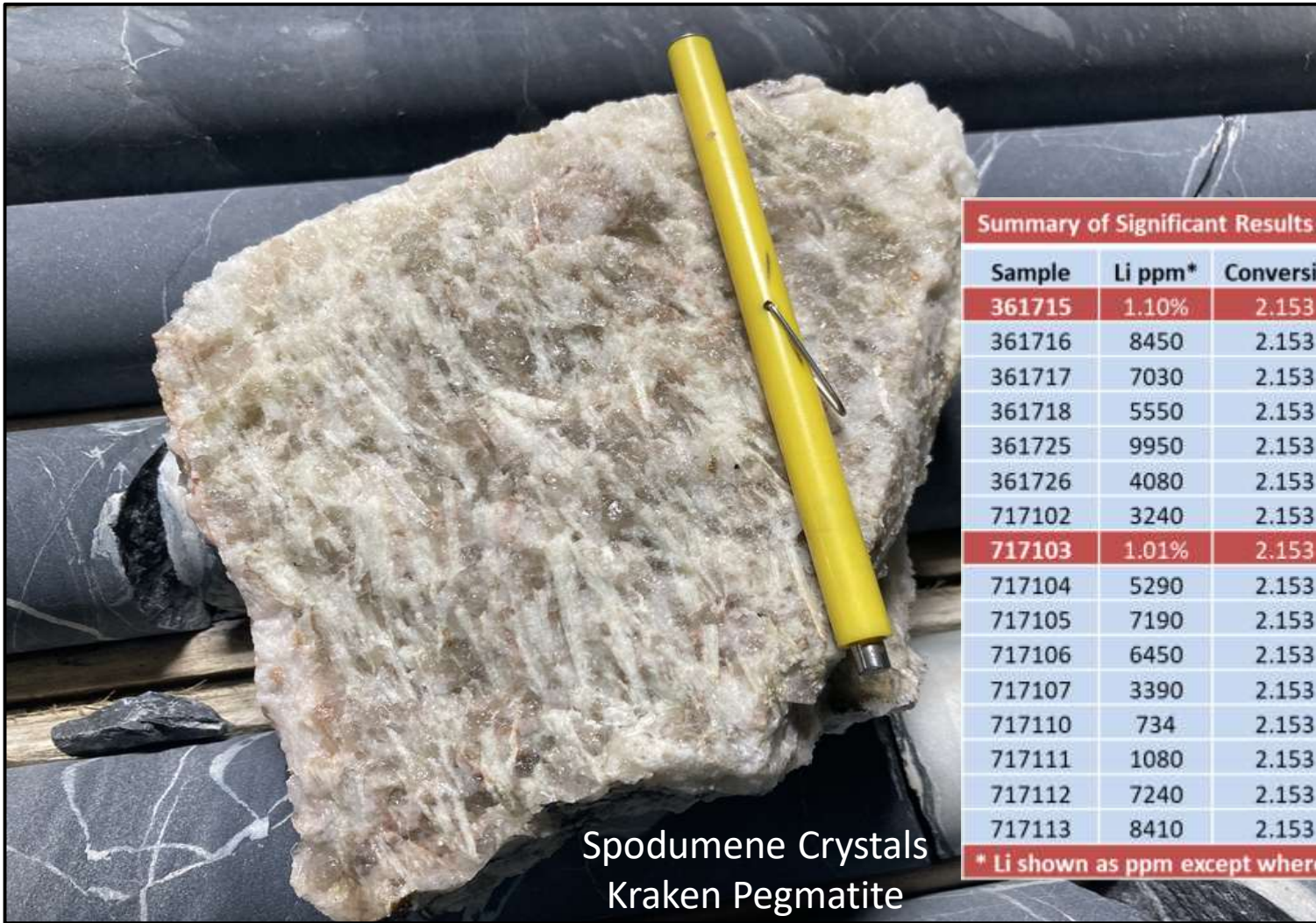
## PROPERTY OVERVIEW

- District-scale property position, over 60 km of prospecting strike length to explore!
- Significant new Lithium and Cesium discoveries, first in NL
- Multiple Li-bearing dykes in the Kraken Pegmatite Field
- New Cesium discovery at the Hydra Dyke 12 km northeast of Kraken



# Golden Hope JV – Kraken Lithium and Hydra Cesium Discovery

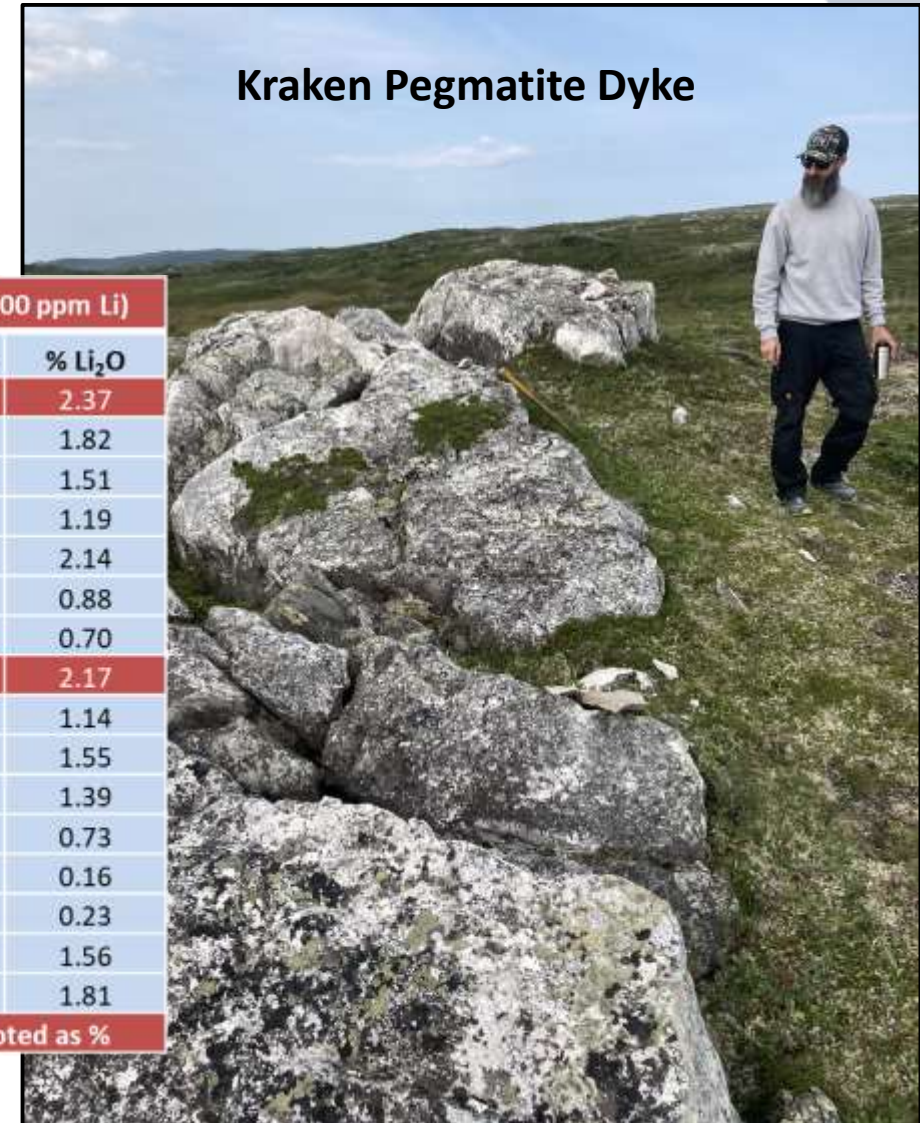
## *KRAKEN LITHIUM DISCOVERY*



Spodumene Crystals  
Kraken Pegmatite

Summary of Significant Results (>500 ppm Li)			
Sample	Li ppm*	Conversion	% Li <sub>2</sub> O
<b>361715</b>	<b>1.10%</b>	<b>2.153</b>	<b>2.37</b>
361716	8450	2.153	1.82
361717	7030	2.153	1.51
361718	5550	2.153	1.19
361725	9950	2.153	2.14
361726	4080	2.153	0.88
717102	3240	2.153	0.70
<b>717103</b>	<b>1.01%</b>	<b>2.153</b>	<b>2.17</b>
717104	5290	2.153	1.14
717105	7190	2.153	1.55
717106	6450	2.153	1.39
717107	3390	2.153	0.73
717110	734	2.153	0.16
717111	1080	2.153	0.23
717112	7240	2.153	1.56
717113	8410	2.153	1.81

\* Li shown as ppm except where noted as %

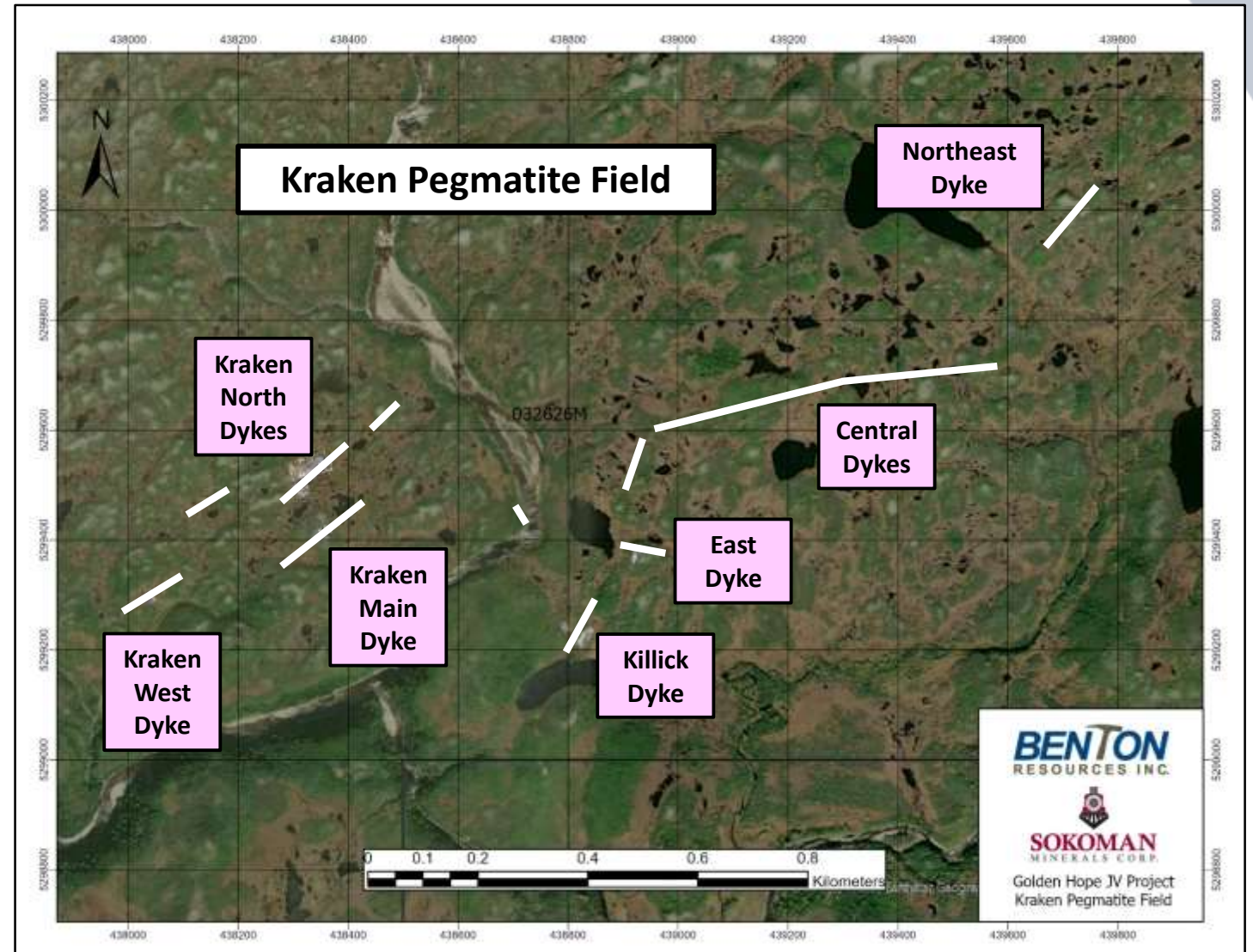


Kraken Pegmatite Dyke

# Golden Hope JV – Kraken Lithium and Hydra Cesium Discovery

## **KRAKEN PEGMATITE FIELD**

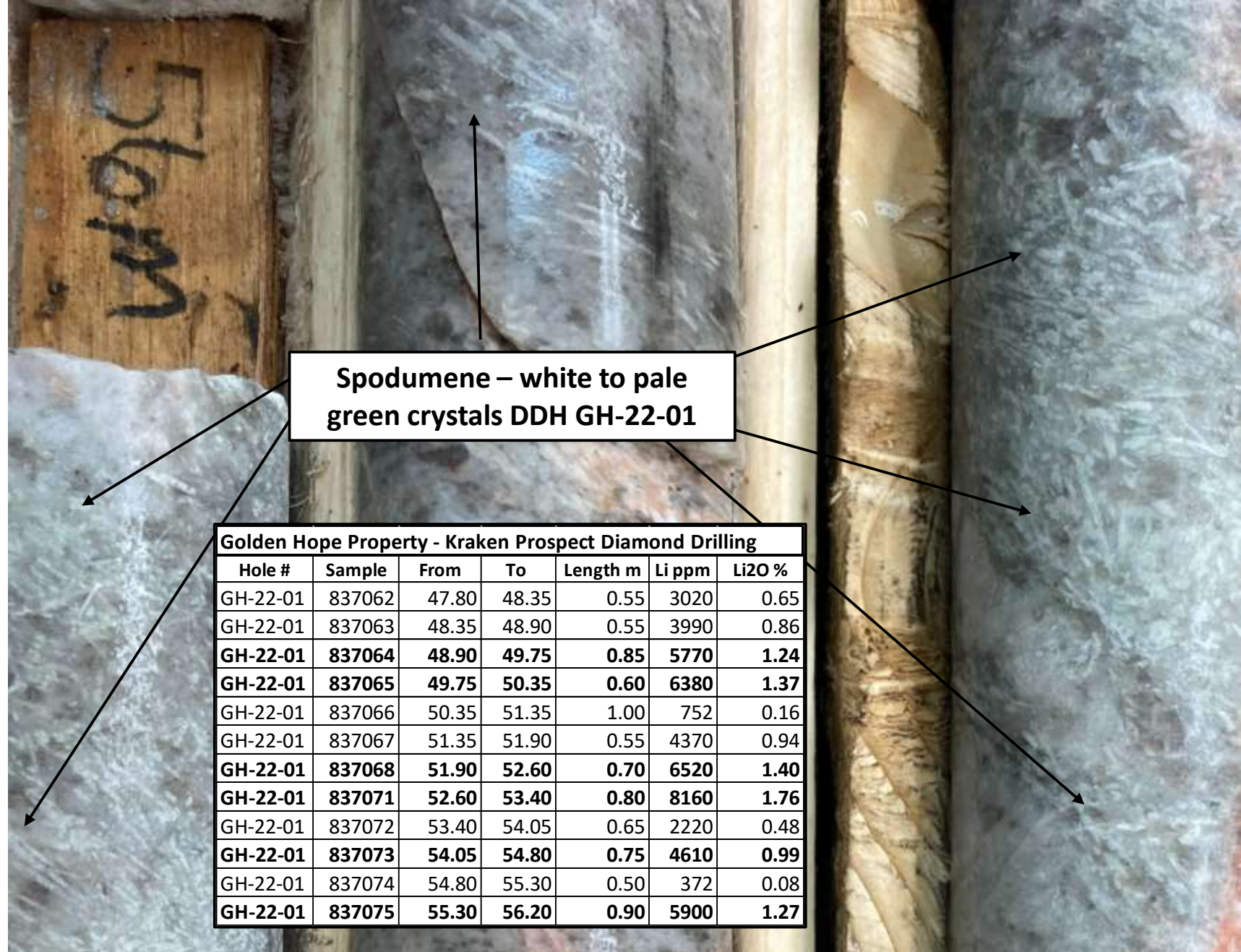
- The Kraken Pegmatite Field is approximately 1 km x 2 km and contains several LCT pegmatites
- All dykes are open and require more drilling
- 2022 Drilling Intersections Include:
  - 15.23 m @ 1.04% Li<sub>2</sub>O in GH-22-27 and 9.50 m @ 1.08% Li<sub>2</sub>O in GH-22-26 from the Killick Dyke
  - 20.82 m @ 0.60% Li<sub>2</sub>O incl. 5.50 m @ 1.16% Li<sub>2</sub>O in GH-22-15, and 8.37 m @ 0.91% Li<sub>2</sub>O in GH-22-08 from the East Dyke
  - 8.40 m @ 0.95% Li<sub>2</sub>O in GH-22-01 from the Kraken Dyke and 16.20 m @ 0.43% Li<sub>2</sub>O on the Kraken North Dyke



# Kraken Lithium Discovery

## PHASE 1 DRILLING WINTER 2022

- 5 holes for 1,025 m completed on Kraken Pegmatite Discovery
- GH-22-01 intersected 8.40 m @ 0.95% Li<sub>2</sub>O at the Kraken Dyke with samples up to 1.76% Li<sub>2</sub>O
- GH-22-05 returned 16.20 m @ 0.43% Li<sub>2</sub>O on the Kraken North Dyke
- Multiple dykes intersected in maiden recon program testing only the discovery area (~ 100 m strike)



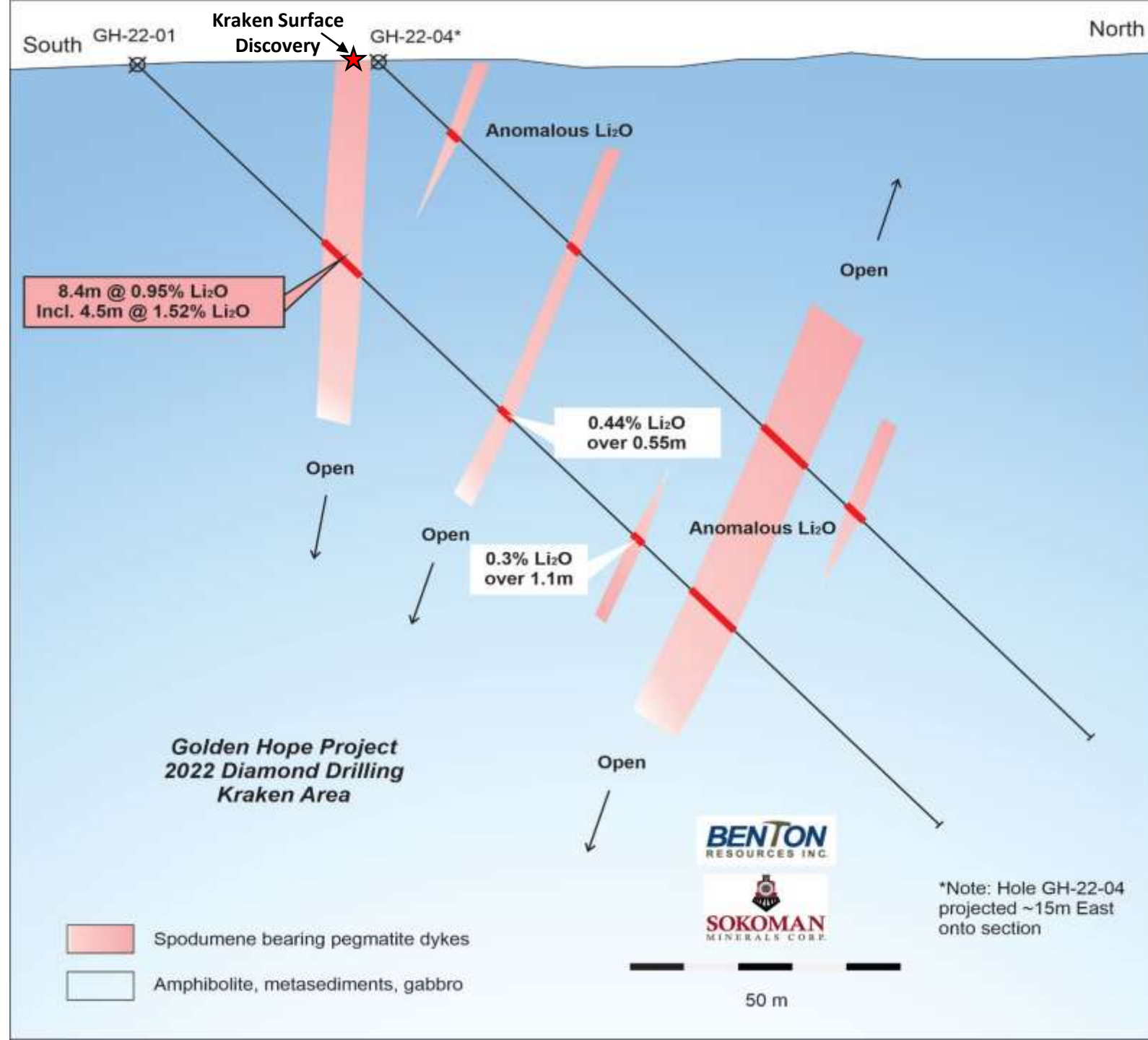
**Spodumene – white to pale green crystals DDH GH-22-01**

Golden Hope Property - Kraken Prospect Diamond Drilling						
Hole #	Sample	From	To	Length m	Li ppm	Li <sub>2</sub> O %
GH-22-01	837062	47.80	48.35	0.55	3020	0.65
GH-22-01	837063	48.35	48.90	0.55	3990	0.86
<b>GH-22-01</b>	<b>837064</b>	<b>48.90</b>	<b>49.75</b>	<b>0.85</b>	<b>5770</b>	<b>1.24</b>
<b>GH-22-01</b>	<b>837065</b>	<b>49.75</b>	<b>50.35</b>	<b>0.60</b>	<b>6380</b>	<b>1.37</b>
GH-22-01	837066	50.35	51.35	1.00	752	0.16
GH-22-01	837067	51.35	51.90	0.55	4370	0.94
<b>GH-22-01</b>	<b>837068</b>	<b>51.90</b>	<b>52.60</b>	<b>0.70</b>	<b>6520</b>	<b>1.40</b>
<b>GH-22-01</b>	<b>837071</b>	<b>52.60</b>	<b>53.40</b>	<b>0.80</b>	<b>8160</b>	<b>1.76</b>
GH-22-01	837072	53.40	54.05	0.65	2220	0.48
<b>GH-22-01</b>	<b>837073</b>	<b>54.05</b>	<b>54.80</b>	<b>0.75</b>	<b>4610</b>	<b>0.99</b>
GH-22-01	837074	54.80	55.30	0.50	372	0.08
<b>GH-22-01</b>	<b>837075</b>	<b>55.30</b>	<b>56.20</b>	<b>0.90</b>	<b>5900</b>	<b>1.27</b>

# Kraken Lithium Discovery

## PHASE 1 DRILLING WINTER 2022

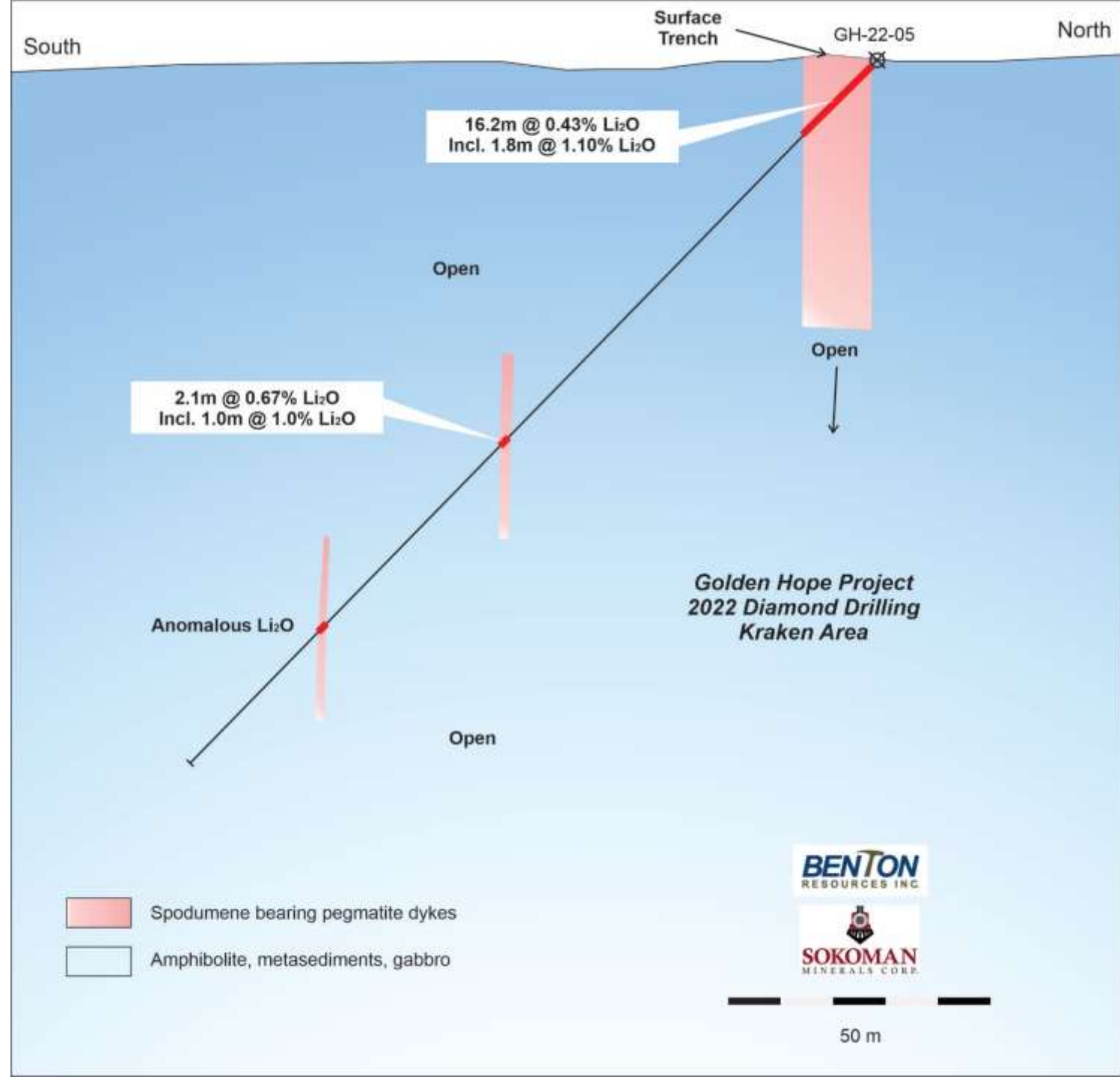
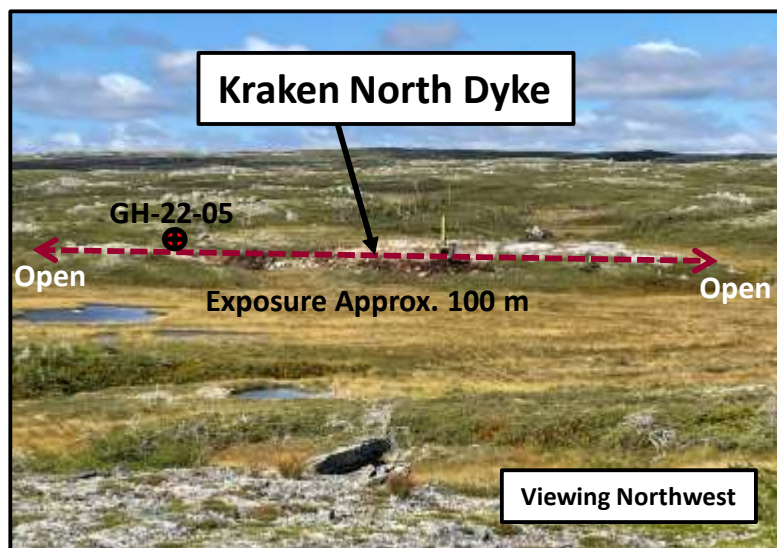
- GH-22-01 intersected 8.40 m @ 0.95%  $\text{Li}_2\text{O}$  at the Kraken Dyke with samples up to 1.76%  $\text{Li}_2\text{O}$
- Multiple dykes intersected indicating the presence of a significant dyke swarm – Kraken Pegmatite Field
- All intersections remain open for follow-up
- Hole GH-22-04 was collared just ahead of Kraken Dyke as recognized after surface trenching (successfully intersected in Phase 3 drilling)



# Kraken Lithium Discovery

## PHASE 1 DRILLING WINTER 2022

- GH-22-05 intersected 16.20 m @ 0.43%  $\text{Li}_2\text{O}$  at the Kraken North Dyke with grades exceeding 1.00%  $\text{Li}_2\text{O}$
- Multiple dykes intersected indicating the presence of a significant dyke swarm – Kraken Pegmatite Field
- Only one hole completed - remains open for follow-up



# Kraken Lithium Discovery

## PHASE 2 DRILLING SUMMER 2022

- 18 holes for 3,073 m completed on East Dyke, Central Dyke and Northeast Dyke
- GH-22-15 intersected 20.82 m @ 0.60% Li<sub>2</sub>O at the East Dyke including 5.50 m @ 1.16% Li<sub>2</sub>O
- Wide Beryllium-bearing pegmatite intersected at Central Dyke, 2.15% Li<sub>2</sub>O angular float present
- Multiple dykes intersected at Northeast target, 1.30% Li<sub>2</sub>O angular float present



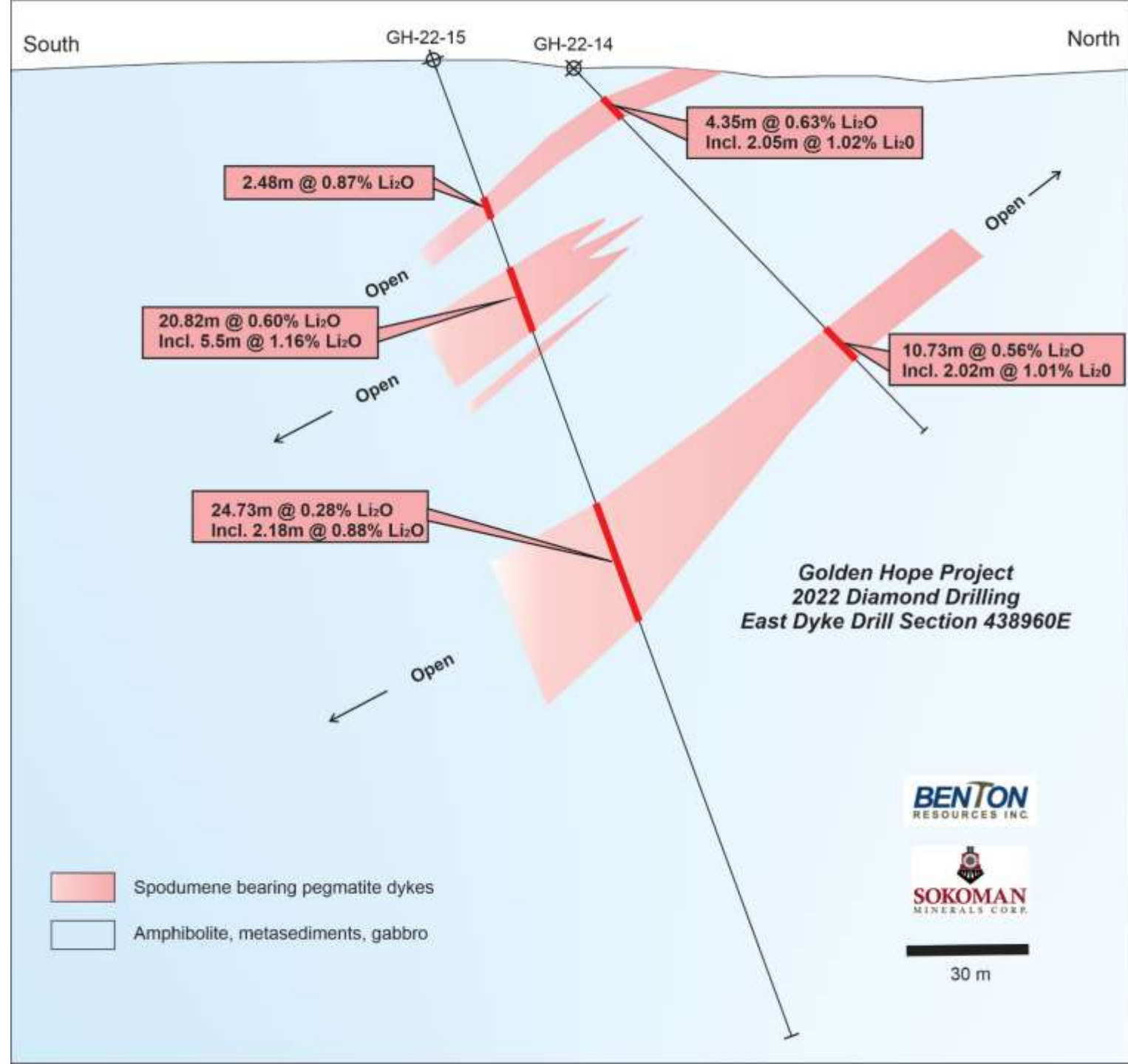




# Kraken Lithium Discovery

## PHASE 2 DRILLING SUMMER 2022

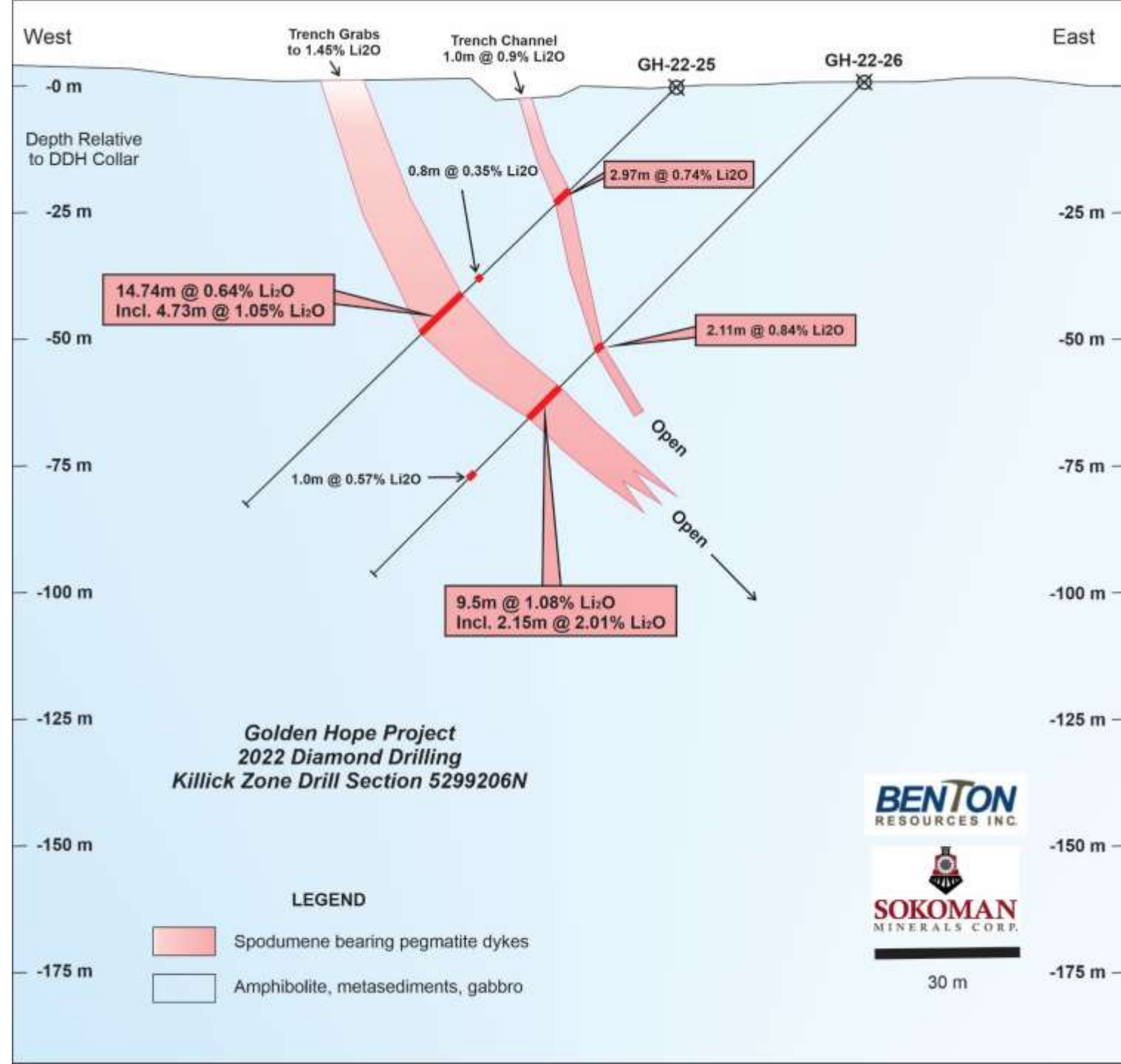
- GH-22-15 intersected 20.82 m @ 0.60%  $\text{Li}_2\text{O}$  at the East Dyke including 5.50 m @ 1.16%  $\text{Li}_2\text{O}$
- GH-22-14 intersected 10.73 m @ 0.56%  $\text{Li}_2\text{O}$  at the East Dyke
- Wide Beryllium-bearing pegmatite intersected at Central Dyke, 2.15%  $\text{Li}_2\text{O}$  angular float present
- Multiple dykes intersected at Northeast target, 1.30%  $\text{Li}_2\text{O}$  angular float present



# Kraken Lithium Discovery

## PHASE 3 DRILLING FALL 2022

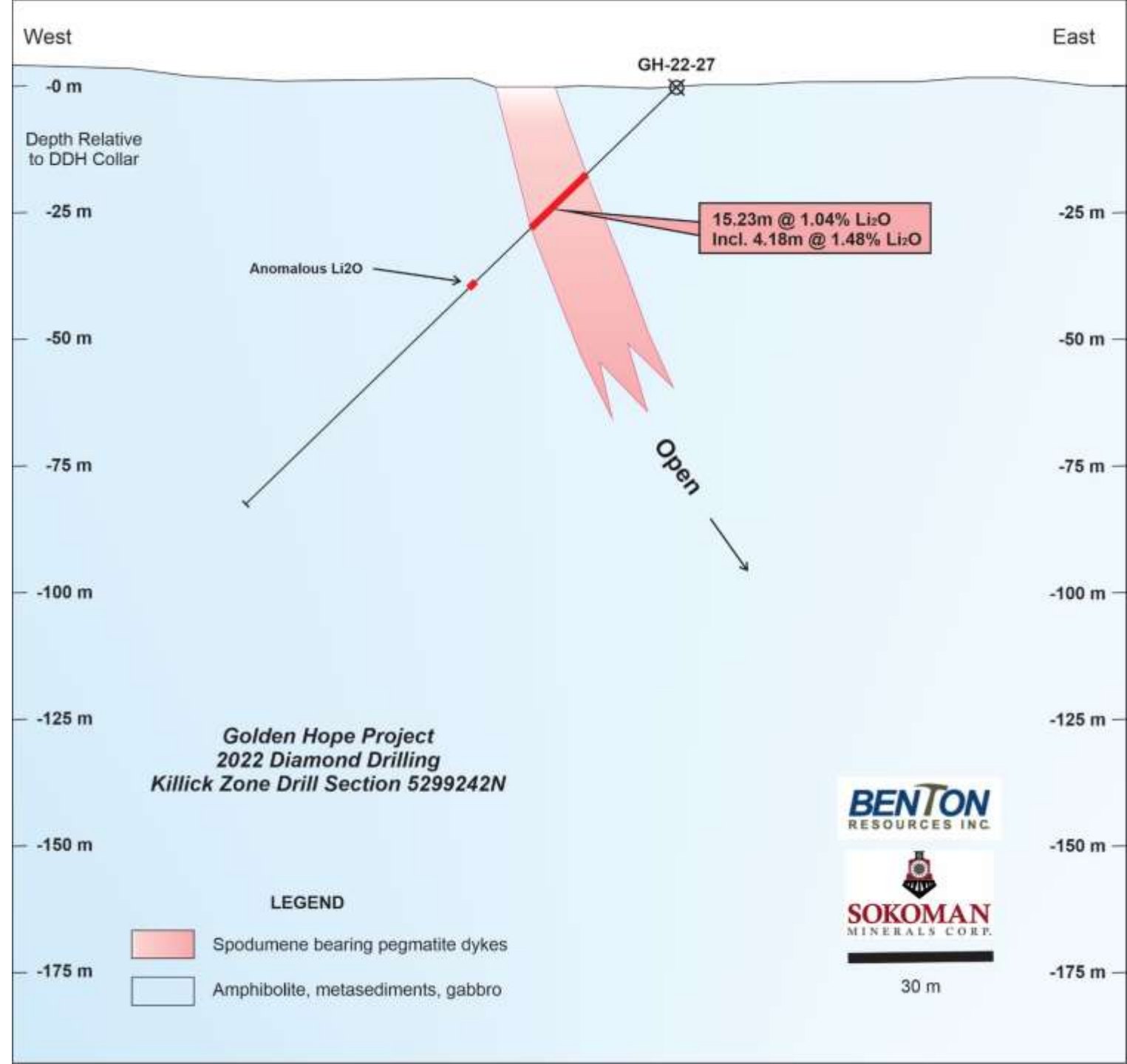
- 11 holes for 1,607 m completed on Killick Dyke and Kraken Dyke with best intersections to date
- GH-22-25 intersected 14.74 m @ 0.64% Li<sub>2</sub>O at the Killick Dyke including 4.73 m @ 1.05% Li<sub>2</sub>O
- GH-22-26 intersected 9.50 m @ 1.08% Li<sub>2</sub>O including 2.15 m @ 2.01% Li<sub>2</sub>O
- Killick is new discovery from 2022 prospecting and trenching located approx. 200 meters south of East Dyke near anomalous soil geochemistry



# Kraken Lithium Discovery

## PHASE 3 DRILLING FALL 2022

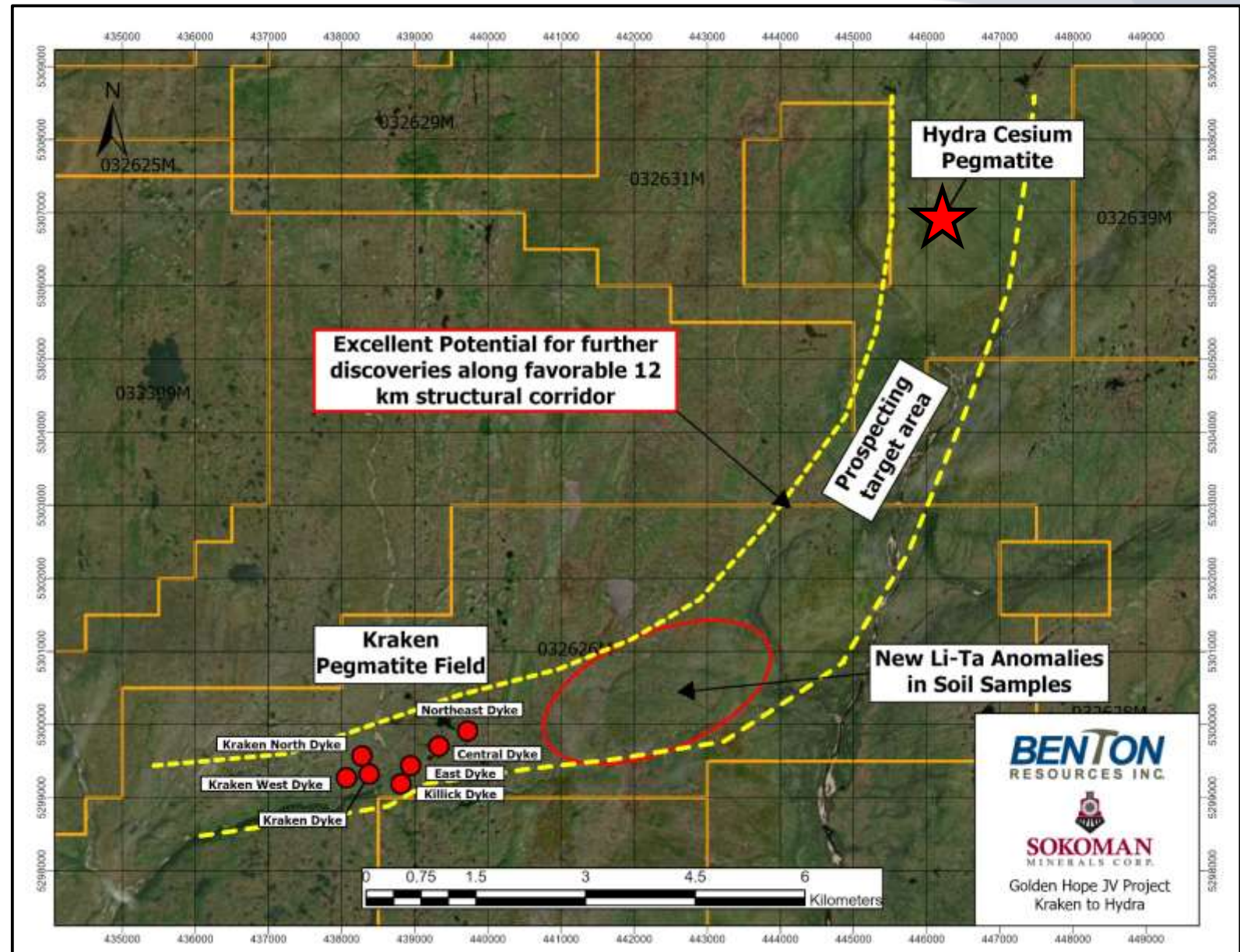
- GH-22-27 intersected 15.23 m @ 1.04% Li<sub>2</sub>O at the Killick Dyke including 4.18 m @ 1.48% Li<sub>2</sub>O
- Best drill intersection to date on the project
- Killick Dyke is open for expansion in all directions and will be a focus of follow-up drilling in Phase 4



# Hydra Cesium Discovery

## A FIRST FOR NEWFOUNDLAND

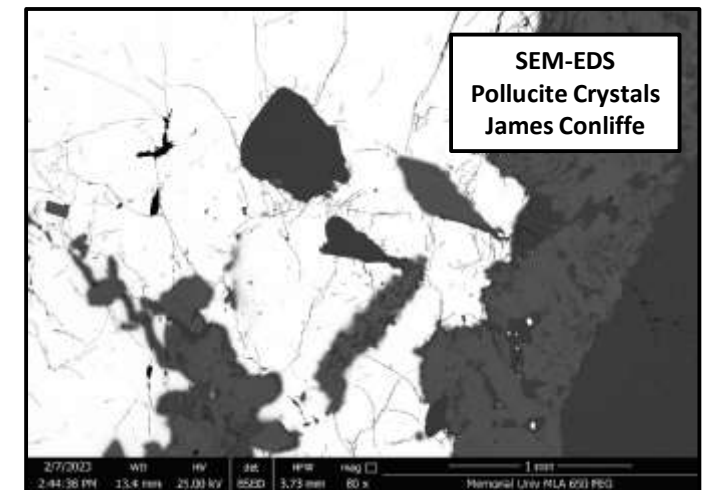
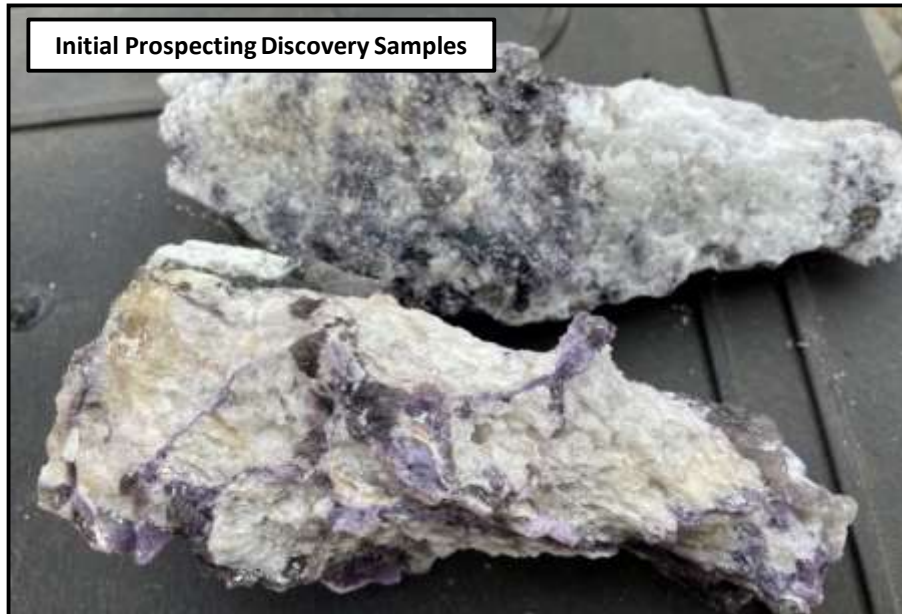
- New Hydra Cesium discovery of pollucite-bearing LCT Pegmatite Dyke 12 km Northeast of Kraken Pegmatite Field
- First-ever cesium discovery in NL
- Channel sample results 1.20 m of 8.75%  $\text{Cs}_2\text{O}$ , 0.41%  $\text{Li}_2\text{O}$ , 0.025%  $\text{Ta}_2\text{O}_5$  and 0.33%  $\text{Rb}_2\text{O}$  including 0.40 m of 13.57%  $\text{Cs}_2\text{O}$  and 0.32%  $\text{Li}_2\text{O}$ .
- The dyke is estimated to be 5-6 m wide & was traced for 100 m where overburden covers the zone in each direction.



# Hydra Cesium Discovery

## *HIGH-GRADE CESIUM OPEN FOR EXPANSION*

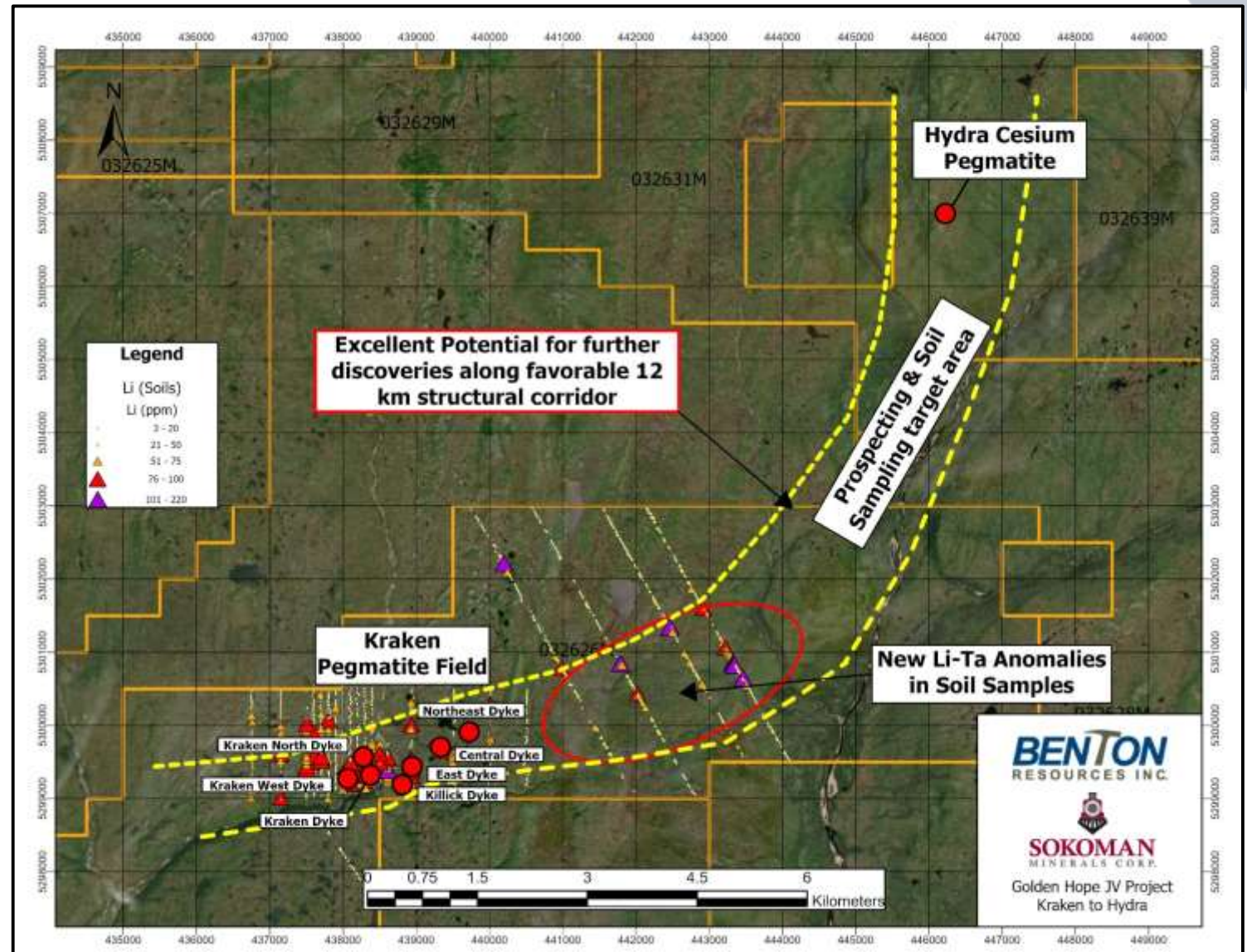
- Initial prospecting and channel sampling completed prior to winter onset
- Dyke open in both directions along strike
- 2023 exploration plans includes prospecting, mapping, geochemical sampling, trenching and diamond drilling
- Early-stage discovery with untapped potential



# Golden Hope JV – Kraken Lithium and Hydra Cesium Discovery

## SOIL GEOCHEMISTRY

- Soil sampling has emerged as a key exploration tool to explore for LCT Pegmatites
- Orientation sampling during summer 2022 proved the effectiveness of the survey on known pegmatites in the Kraken Pegmatite Field, while also identifying two new targets to the north
- Additional sampling in the fall of 2022 generated multiple additional anomalous areas of Li-Ta in soils to the northeast of the Kraken Pegmatite Field
- The Alliance is planning to resume soil sampling activities as soon as weather permits. 2023 sampling will be extensive and cover much of the highly prospective structural corridor from the Kraken Pegmatite Field to the Hydra Cesium Dyke and beyond



# Golden Hope Joint Venture Kraken Lithium and Hydra Cesium

## *MOVING FORWARD*

- **Phase 4 drilling program spring 2023 – minimum 5,000 m**
- **Extensive prospecting, soil sampling and geological mapping**
- **Continued collaboration with multi-disciplinary Critical Minerals Research Initiative**





# ACKNOWLEDGEMENTS

James Conliffe - *GSNL*

Zsuzsanna Magyarosi – *GSNL*

Heather Campbell – *GSNL*

Sean O'Brien – *Far Eastern Geoscience*

Newfoundland Helicopters

Springdale Forest Resources

South Coast Construction

Town of Burgeo

## THANK YOU!

[tim@sokomanmineralscorp.com](mailto:tim@sokomanmineralscorp.com)

[stares@bentonresources.com](mailto:stares@bentonresources.com)

